



Flight Plan & Site Survey

Created using **RPAS Wilco**[®]

Operation Name:	crccs south rcaf field
Pilot Name:	██████████
Pilot Certificate:	██████
Flight Start:	January 20, 2023 8:21 AM
Flight End:	January 20, 2023 10:21 AM
Flight Area (Latitude):	50° 49' 10.60" N (50.82)
Flight Area (Longitude):	113° 49' 7.40" W (-113.819)
Altitude - Radius:	Alt: 700 ft - Rad: 926.0 m (0.5 nm)
Airspace:	UNCONTROLLED
FIR - Contact:	CZEG - 780-890-8397
Weather:	-3.0 Celsius - Partially cloudy

Please ensure you received all required authorizations prior to flight.

Disclaimer

This Site Survey was created using RPAS Wilco by AIM Robotics. The flight plan contained is intended only for RPAS flights on the date/time and location specified. The user accepts all responsibility for the accuracy and completeness of the information contained.

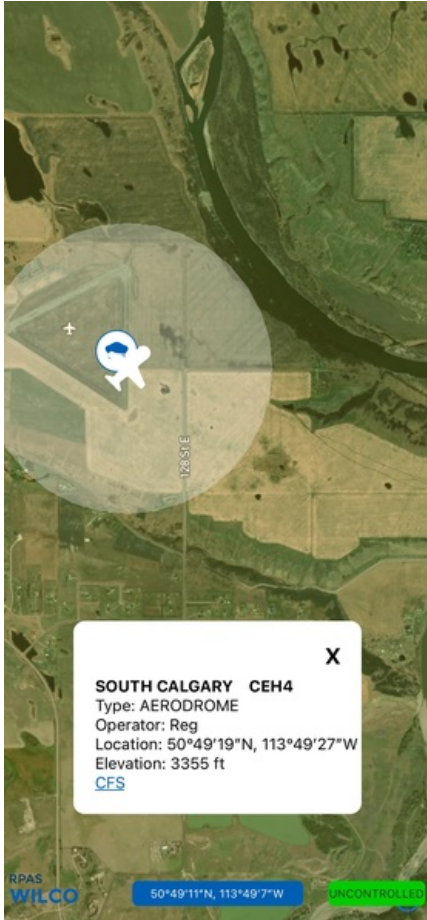
For the complete Terms & Conditions, see

<https://rpswilco.com/#/tnc>



Included

- Site Survey
- Obstacles (if available)
- Nearby Aerodromes
- Canadian Aviation Regulations
- GFA
- Aerodrome Supplements
 - METAR & TAF (if available)
 - NOTAMS
 - CFS

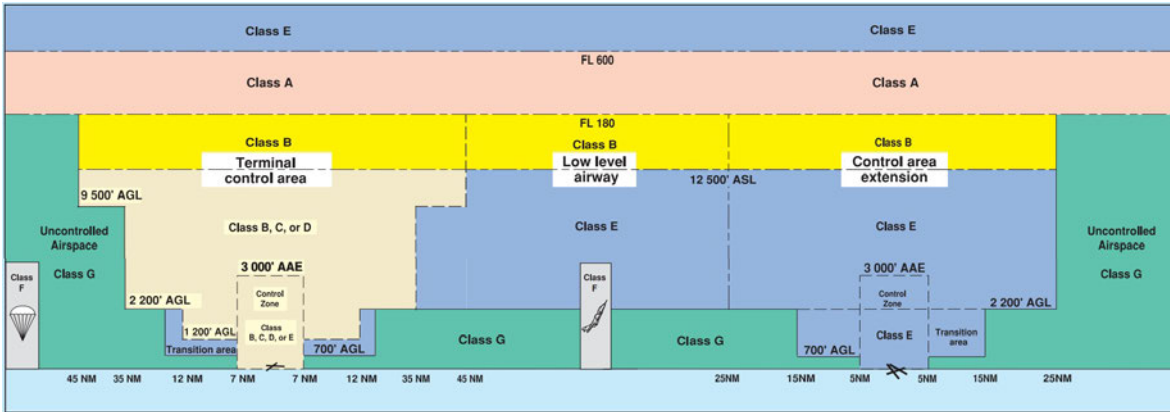
Flight Map



MAP Details

	Latitude	Longitude
 MODEL	50° 49' 10.60" N (50.82)	113° 49' 7.40" W (-113.819)
 Pilot	50° 49' 14.20" N (50.8206)	113° 49' 11.00" W (-113.8197)

Airspace Classification



Overlying Airspaces

Class	Name	Floor	Ceiling
E	Calgary, AB CAE	5800MSL	12500MSL
B	Calgary, AB CAE	12500MSL	18000MSL
C	Calgary, AB TCA	5500MSL	8000MSL
B	Calgary, AB TCA	12500MSL	18000MSL
C	Calgary, AB TCA	8000MSL	12500MSL
E	T727 Airway	2200AGL	12500MSL
B	T727 Airway	12500MSL	18000MSL

Nearest Aerodromes & Distance from Operation

SOUTH CALGARY (CEH4 AERODROME Reg)	Lat: 50.822	Long: 113.824	0.456 KM	0.25 NM
DE WINTON (HIGHWOOD) (CED6 HELIPOINT Reg)	Lat: 50.803	Long: 113.893	5.536 KM	2.99 NM
WINTERS AIRE PARK (CFY4 AERODROME Reg)	Lat: 50.9	Long: 113.784	9.265 KM	5.0 NM
OKOTOKS (ROWLAND FIELD) (CRF4 AERODROME Reg)	Lat: 50.764	Long: 113.958	11.579 KM	6.25 NM

Weather Information for Mission Day

Summary: Partly cloudy throughout the day.

Condition	Temperature	Feels Like	Precipitation	Visibility	Cloud Coverage	Wind Speed	Humidity
Partially cloudy	3.0 Celsius	7.5 Celsius	2.0 %	18.2 Km	62.8 %	36.0 kph	62.2 %

Canadian Aviation Regulations

Division III — General Operating and Flight Rules

For full listing please visit <https://laws-lois.justice.gc.ca/eng/regulations/SOR-96-433/FullText.html#s-901.27>

Visual Line-of-sight

- **901.11 (1)** Subject to subsection (2) no pilot shall operate a remotely piloted aircraft system unless the pilot or a visual observer has the aircraft in visual line-of-sight at all times during flight.
- **(2)** A pilot may operate a remotely piloted aircraft system without the pilot or a visual observer having the aircraft in visual line-of-sight if the operation is conducted in accordance with a special flight operations certificate — RPAS issued under section 903.03.

Procedures

- **901.23 (1)** No pilot shall operate a remotely piloted aircraft system unless the following procedures are established:
 - **(a)** normal operating procedures, including pre-flight, take-off, launch, approach, landing and recovery procedures; and
 - **(b)** emergency procedures, including with respect to
 - **(i)** a control station failure,
 - **(ii)** an equipment failure,
 - **(iii)** a failure of the remotely piloted aircraft,
 - **(iv)** a loss of the command and control link,
 - **(v)** a fly-away, and
 - **(vi)** flight termination.
- **(2)** If the manufacturer of the remotely piloted aircraft system provides instructions with respect to the topics referred to in paragraphs (1)(a) and (b), the procedures established under subsection (1) shall reflect those instructions.
- **(3)** No pilot shall conduct the take-off or launch of a remotely piloted aircraft unless the procedures referred to in subsection (1) are reviewed before the flight by, and are immediately available to, each crew member.
- **(4)** No pilot shall operate a remotely piloted aircraft system unless the operation is conducted in accordance with the procedures referred to in subsection (1).

Site Survey

901.27 No pilot shall operate a remotely piloted aircraft system unless, before commencing operations, they determine that the site for take-off, launch, landing or recovery is suitable for the proposed operation by conducting a site survey that takes into account the following factors:

- **(a)** the boundaries of the area of operation;
- **(b)** the type of airspace and the applicable regulatory requirements;
- **(c)** the altitudes and routes to be used on the approach to and departure from the area of operation;
- **(d)** the proximity of manned aircraft operations;
- **(e)** the proximity of aerodromes, airports and heliports;
- **(f)** the location and height of obstacles, including wires, masts, buildings, cell phone towers and wind turbines;
- **(g)** the predominant weather and environmental conditions for the area of operation; and
- **(h)** the horizontal distances from persons not involved in the operation.

Operations at or in the Vicinity of an Aerodrome, Airport or Heliport

- **901.47 (1)** No pilot shall operate a remotely piloted aircraft at or near an aerodrome that is listed in the *Canada Flight Supplement* or the *Water Aerodrome Supplement* in a manner that could interfere with an aircraft operating in the established traffic pattern.
- **(2)** Subject to section 901.73 no pilot shall operate a remotely piloted aircraft at a distance of less than
 - **(a)** three nautical miles from the centre of an airport; and
 - **(b)** one nautical mile from the centre of a heliport.
- **(3)** No pilot shall operate a remotely piloted aircraft at a distance of less than three nautical miles from the centre of an aerodrome operated under the authority of the Minister of National Defence unless the operation is conducted in accordance with a special flight operations certificate — RPAS issued under section 903.03.

Records

- **901.48 (1)** Every owner of a remotely piloted aircraft system shall keep the following records:
 - **(a)** a record containing the names of the pilots and other crew members who are involved in each flight and, in respect of the system, the time of each flight or series of flights and
 - **(b)** a record containing the particulars of any mandatory action and any other maintenance action, modification or repair performed on the system, including
 - **(i)** the names of the persons who performed them,
 - **(ii)** the dates they were undertaken,
 - **(iii)** in the case of a modification, the manufacturer, model and a description of the part or equipment installed to modify the system, and
 - **(iv)** if applicable any instructions provided to complete the work.
- **(2)** Every owner of a remotely piloted aircraft system shall ensure that the records referred to in subsection (1) are made available to the Minister on request and are retained for a period of
 - **(a)** in the case of the records referred to in paragraph (1)(a), 12 months after the day on which they are created; and
 - **(b)** in the case of the records referred to in paragraph (1)(b), 24 months after the day on which they are created.
- **(3)** Every owner of a remotely piloted aircraft system who transfers ownership of the system to another person shall, at the time of transfer, also deliver to that person all of the records referred to in paragraph (1)(b).

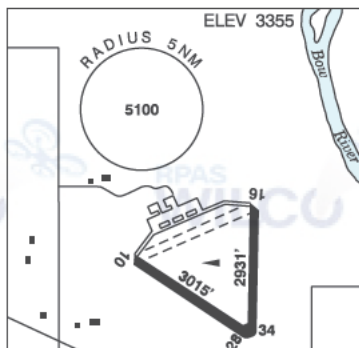
ALBERTA

AERODROME / FACILITY DIRECTORY

DE WINTON / SOUTH CALGARY AB

CEH4

REF	N50 49 19 W113 49 28 7E 15°E (2012) UTC-7(6) Elev 3355' VTA A5005
OPR	Cordillera Petroleum of Canada Ltd 403-243-5326 Reg PPR
PF	D-1,2,3,4,5,6
FLT PLN	
FIC	Edmonton 866-WXBRIEF (Toll free within Canada) or 866-541-4102 (Toll free within Canada & USA)
ACC	Edmonton IFR 888-358-7526
RWY DATA	Rwy 10/28 3015x150 asphalt Rwy 16/34 2931x150 asphalt
RCR	Opr No win maint
COMM	
ATF	UNICOM ltd hrs O/T tfc 122.8 5NM 6400 ASL
CAUTION	Rwy 10/28 and 16/34 sfcs deteriorating.



ALBERTA

AERODROME/FACILITY DIRECTORY

DE WINTON (HIGHWOOD) AB (Heli)

CED6

REF	N50 48 11 W113 53 34 5ESE 14°E (2014) UTC-7(6) Elev 3435' VTA A5005	
OPR	2124068 Alberta Ltd 403-938-1855 Reg PPR	
PF	B-1 C-2,3,4,5,6	
FLT PLN		
FIC	Edmonton 866-WXBRIEF (Toll free within Canada) or 866-541-4102 (Toll free within Canada & USA)	
ACC	Edmonton IFR 888-358-7526	
HELI DATA	100'X125' CONC/TURF	
RCR	Opr	
COMM		
ATF	UNICOM ltd hrs O/T tfc 122.8 5NM 6500 ASL	
PRO	Arr/Dep btwn 075°-115° fr heli	

ALBERTA

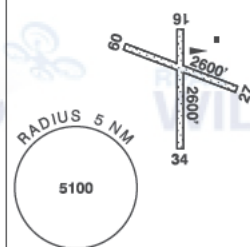
AERODROME/FACILITY DIRECTORY

INDUS / WINTERS AIRE PARK AB

CFY4

REF	N50 54 W113 47 1SW 15°E (2012) UTC-7(6) Elev 3370' VTA A5005
OPR	Blue Yonder Avn 403-936-5767 Reg PPR
PF	B-1 D-2,3,4,5,6
FLT PLN	
FIC	Edmonton 866-WXBRIEF (Toll free within Canada) or 866-541-4102 (Toll free within Canada & USA)
ACC	Edmonton IFR 888-358-7526
SERVICES	
FUEL	MG-1
S	1,2
RWY DATA	Rwy 09(096°)/27(276°) 2600x75 turf Rwy 16(165°)/34(345°) 2600x75 turf
RCR	Opr Ltd maint, sfc ruf.
COMM	
ATF	tfc 123.2 5NM 4800 ASL

ELEV 3370



ALBERTA

AERODROME/FACILITY DIRECTORY

CALGARY / OKOTOKS (ROWLAND FIELD) AB

CRF4

REF	N50 45 53 W113 57 29 13S 15°E (2012) UTC-7(6) Elev 3800' VTA A5005	
OPR	W Rowland 403-938-6262 Reg PPR	
PF	C-1,2,3,4,5	
FLT PLN		
FIC	Edmonton 866-WXBRIEF (Toll free within Canada) or 866-541-4102 (Toll free within Canada & USA)	
ACC	Edmonton IFR 888-358-7526	
RWY DATA	Rwy 07(075°)/25(255°) 2000x200 turf	
RCR	Opr ltd maint. No win maint. Clsd dur spring break-up. Soft when wet.	
COMM		
ATF	tfc 122.8 5NM centred on Okotoks Air Ranch Airport 2NM SE 6700 ASL	
CAUTION	Ultra-light & nordo t/c. Rwy not level, centre not vis fr Thld 07. 4' fence across Thld 07. Road & P-line 600' E Thld 25. P-line N of rwy, trees S of rwy. Wildlife in vic. Avoid flight over homes N & SW of airfield. Light acct only. Okotoks Air Ranch Airport (CFX2) 2NM SE. Avoid takeoff 07.	